

RS II

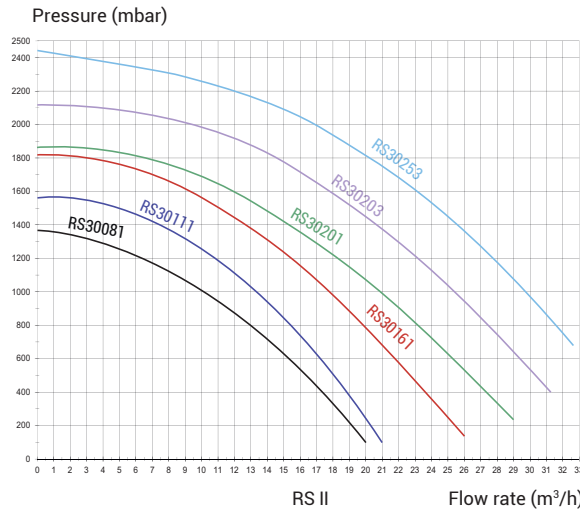
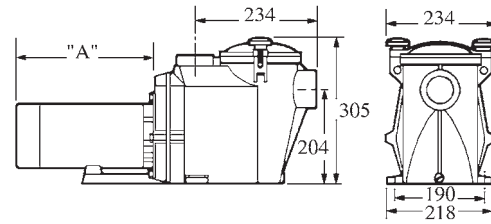
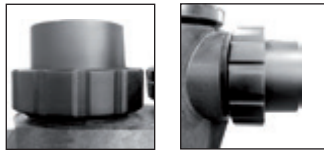
YEARS OF WARRANTY



2 YEARS OF WARRANTY
 TOTALLY PARTNER
 +1 +1

Packed full of power

- **Reliable heavy-duty German engine** for maximum efficiency
- **Suitable for large pools** up to 140 m³
- Union fitting kit for **easy installation and maintenance**
- **Extra-wide strainer basket (2 950 cm³)** to reduce cleaning frequency
- **Transparent strainer basket** for easy maintenance



RS II SINGLE PHASE

RS II THREE PHASE

	Power (HP)	Watt	Flow Rate*	In/Out	Weight	Side A	Maximum Consumption	Amperage	Ref
	0.75	0.55 Kw	12.5 m ³ /h	63 mm	12 kg	213 mm	870 W	3.6	RS30081
	1	0.75 Kw	15 m ³ /h	63 mm	15 kg	213 mm	975 W	4.3	RS30111
	1.5	1.1 Kw	19.5 m ³ /h	63 mm	16 kg	225 mm	1 100 W	5	RS30161
	2	0.75 Kw	20.5 m ³ /h	63 mm	16 kg	230 mm	1 500 W	7.25	RS30201
	2	1.5 Kw	22.5 m ³ /h	63 mm	16 kg	230 mm	1 500 W	5.2 / 3.0	RS30203 IE3 ✓
	2.5	2.2 Kw	26.5 m ³ /h	63 mm	23 kg	280 mm	2 600 W	7.8 / 4.5	RS30253 IE3 ✓

* under 8 m water column pressure